



AZ Construction Supplies

- 📍 1409 Oriana Rd
Yorktown, VA. 23693
- ☎ 757 872 0700
- ✉ sales@azcsupplies.com
- 🌐 azcsupplies.com



SCH 40 450 PSI 124541120 PVC DURAFORT by CRESCU

SCHEDULE 40 DWV PVC PIPE

MANUFACTURED
ACCORDING TO THE
ASTM D1785*

Diameter	Average Outside Diameter (D ¹)		Average Inside Diameter (D ²)		Minimum Wall (w)		Minimum Water Pressure at 73.4 °F (23 °C)		Average Pipe Weight		Feet per skid	Skids per full truckload
	(in)	(in)	(mm)	(in)	(mm)	(in)	(mm)	(in)	(mm)	(lb/ft)		
½"	0.840	21.34	0.609	15.5	0.109	2.8	600	42.1	0.157	0.23	12000	22
¾"	1.050	26.67	0.810	20.6	0.113	2.9	480	33.7	0.210	0.31	8000	24
1"	1.315	33.40	1.033	26.2	0.133	3.4	450	31.6	0.310	0.46	7060	19
1¼"	1.660	42.16	1.363	34.6	0.140	3.6	370	26.0	0.420	0.62	4440	22
1½"	1.900	48.26	1.593	40.5	0.145	3.7	330	23.2	0.504	0.75	2900	29
2"	2.375	60.32	2.049	52.0	0.154	3.9	280	19.7	0.676	1.00	3860	16
2½"	2.875	73.02	2.445	62.1	0.203	5.2	300	21.1	1.070	1.59	2900	14
3"	3.500	88.90	3.042	77.3	0.216	5.5	260	18.3	1.410	2.10	2080	12
4"	4.500	114.30	3.998	101.5	0.237	6.0	220	15.4	2.000	2.97	1340	12
6"	6.625	168.28	6.031	153.2	0.280	7.1	180	12.6	3.520	5.23	600	12
8"	8.625	219.08	7.942	201.7	0.322	8.2	160	11.2	5.390	8.01	360	12
10"	10.750	273.05	9.976	253.4	0.365	9.3	140	9.8	7.550	11.22	220	12
12"	12.750	323.85	11.889	302.0	0.406	10.3	130	9.1	10.010	14.87	160	12
14"	14.000	355.60	13.126	333.4	0.437	11.1	130	9.1	11.801	17.53	160	9
16"	16.000	406.40	15.000	381.0	0.500	12.7	130	9.1	15.431	22.93	160	8
18"	18.000	457.20	16.825	427.4	0.562	14.3	130	9.1	20.286	30.18		25
20"	20.000	508.00	18.761	476.5	0.593	15.1	120	8.4	23.832	35.46		20
24"	24.000	609.60	22.564	573.1	0.687	17.4	120	8.4	33.136	49.30		16

* Dual marked ASTM D1785 and ASTM D2665.

NSF Listed meets all requirements of ASTM D1785, ASTM D1784 and ASTM D2665.



- › Light weight
- › Low coefficient of friction
- › Ease of installation
- › Corrosion resistance
- › It does not transmit odor or taste



APPLICATIONS: Ideal for Semi-Industrial applications, residential and greenhouse irrigation, treatment plants, hydrosanitary facilities, chemical processes, swimming pools, HVAC, among others, where the operating temperature does not exceed 140°F (60°C).

SCHEDULE 80 PVC PIPE

MANUFACTURED
ACCORDING TO THE
ASTM D1785

Diameter	Average Outside Diameter (D ¹)		Average Inside Diameter (D ²)		Minimum Wall (w)		Minimum Water Pressure at 73.4 °F (23 °C)		Average Pipe Weight	
	(in)	(mm)	(in)	(mm)	(in)	(mm)	(in)	(mm)	(lb/ft)	(kg/m)
½"	0.840	21.34	0.535	13.6	0.146	3.7	850	58.6	0.208	0.309
¾"	1.050	26.67	0.732	18.6	0.154	3.9	690	47.6	0.283	0.422
1"	1.315	33.40	0.937	23.8	0.181	4.6	630	43.4	0.420	0.625
1¼"	1.660	42.16	1.260	32.0	0.193	4.9	520	35.9	0.577	0.860
1½"	1.900	48.26	1.481	37.6	0.200	5.1	470	32.4	0.702	1.045
2"	2.375	60.32	1.921	48.8	0.217	5.5	400	27.6	0.960	1.438
2½"	2.875	73.02	2.299	58.4	0.276	7.0	420	29.0	1.482	2.205
3"	3.500	88.90	2.875	73.0	0.299	7.6	370	25.5	1.974	2.938
4"	4.500	114.30	3.791	96.3	0.339	8.6	320	22.1	2.905	4.322
6"	6.625	168.28	5.720	145.3	0.433	11.0	280	19.3	5.537	8.239
8"	8.625	219.08	7.582	192.6	0.500	12.7	250	17.2	8.392	12.488
10"	10.750	273.05	9.514	241.8	0.591	15.0	230	15.9	12.479	18.568
12"	12.750	323.85	11.311	287.3	0.689	17.5	230	15.9	17.140	25.503
14"	14.000	355.60	12.424	315.7	0.752	19.1	220	15.4	20.557	30.587
16"	16.000	406.40	14.240	361.7	0.843	21.4	220	15.4	26.428	39.323
18"	18.000	457.20	16.042	407.5	0.937	23.8	220	15.5	33.060	49.19
20"	20.000	508.00	17.845	453.3	1.031	26.2	220	15.5	40.462	60.20
24"	24.000	609.60	21.454	544.9	1.218	30.9	210	14.8	56.899	84.66



- › Light weight
- › Low coefficient of friction
- › Ease of installation
- › Corrosion resistance
- › It does not transmit odor or taste



APPLICATIONS: Ideal for industrial applications, chemical processes, water treatment, potable water systems, agricultural and many other applications that involve the transfer of corrosive fluids where the operating temperature does not exceed 140°F (60°C).

SCHEDULE 80 CPVC PIPE

MANUFACTURED
ACCORDING TO THE
ASTM F441

Diameter	Average Outside Diameter (D ¹)		Average Inside Diameter (D ²)		Minimum Wall (w)		Minimum Water Pressure at 73.4 °F (23 °C)		Average Pipe Weight		Feet per skid	Skids per full truckload
	(in)	(in)	(mm)	(in)	(mm)	(in)	(mm)	(in)	(mm)	(lb/ft)		
½"	0.840	21.34	0.533	13.5	0.147	3.7	850	59.8	0.208	0.309	9600	21
¾"	1.050	26.67	0.728	18.5	0.154	3.9	690	48.5	0.284	0.422	5700	27
1"	1.315	33.40	0.941	23.9	0.179	4.6	630	44.3	0.420	0.625	4000	25
1¼"	1.660	42.16	1.261	32.0	0.191	4.9	520	36.6	0.578	0.860		
1½"	1.900	48.26	1.482	37.6	0.200	5.1	470	33.0	0.702	1.045		
2"	2.375	60.32	1.919	48.8	0.218	5.5	400	28.1	0.966	1.438	1600	27
2½"	2.875	73.02	2.298	58.4	0.276	7.0	420	29.5	1.482	2.205	1200	24
3"	3.500	88.90	2.873	73.0	0.300	7.6	370	26.0	1.975	2.938	1060	20
4"	4.500	114.30	3.796	96.4	0.337	8.6	320	22.5	2.905	4.322	560	26
6"	6.625	168.28	5.722	145.3	0.432	11.0	280	19.7	5.537	8.239	280	27
8"	8.625	219.08	7.580	192.5	0.500	12.7	250	17.6	8.393	12.488		

› **HIGH HEAT RESISTANCE:**

Resin certified with High Deflection Temperature (HHDT "High Heat Deflection Temperature") that allows its use in the conduction of hot water or in industrial processes with temperatures of up to 199.4 °F (93° C).

› **CHEMICAL AND CORROSION RESISTANCE:**

Offers greater resistance to corrosion than metallic pipes, especially when conducting aggressive chemicals at high temperatures.



DURAFORT by CRESCO® SCHEDULE 80 CPVC pipe is the best option for processes with high temperatures that require a high degree of durability, excellent chemical resistance and superior impact resistance that result in a long service life and the reduction of production stoppages due to corrective maintenance.



AWWA C900 PVC PIPE

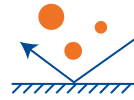
PVC C.I.O.D. Distribution Pipe Pressure Class 165, 235 and 305 psi 4" to 18"

› RESISTANCE:



CRESCO® C900 PVC pipe pressure class 165 (DR-25), 235 (DR-18) and 305 (DR-14) has an excellent long term hydrostatic strength to meet the high safety requirements commonly needed by municipal water systems.

› CORROSION RESISTANCE:



CRESCO® C900 PVC PIPE is unaffected by electrolytic or galvanic corrosion, or any known corrosive soil.

› LIGHT WEIGHT:



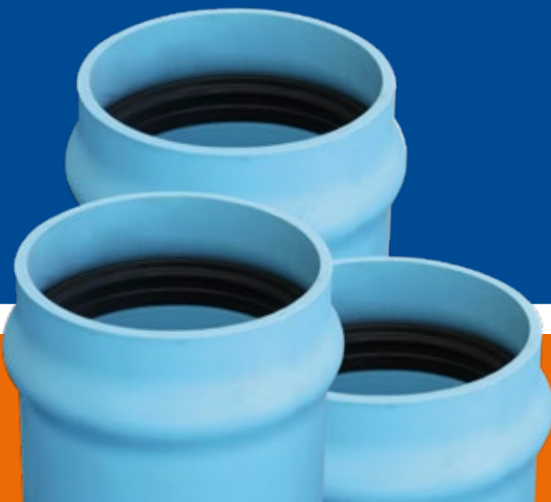
A 20 foot (6.1m) length of 8" diameter pressure class 235 (DR-18) **CRESCO® C900 PVC PIPE** weighs approximately 183 lbs (83 kg).

› FLOW CAPACITY:



This **CRESCO® C900 PVC PIPE** has a smooth interior that stays over long years of service with virtually no loss in carrying capacity.

JOINTS WITH LOCKED IN GASKETS ▼



Manufactured in light blue color, conforms to **ANSI/AWWA C900**, Gaskets Meet **ASTM F447** and joints comply with **ASTM D3139**.

CRESCO® C900 PVC PIPE joints can be assembled quickly. The factory installed RIEBER type gasket provides a tight seal that protects the line from shock, vibration, earth movement and compensates for expansion and contraction of pipe lengths.

- › Factory installed gasket for ease of assembly
- › Spigot pipe end supplied with bevels from factory
- › The bell is an integral part of the pipe length



PIPE STIFFNESS				Burst - Test pressure at 73.4°F (23°C)			
CLASS	DR	psi	(kg/cm ²)	CLASS	DR	psi	(kg/cm ²)
165	25	128	9.00	165	25	535	37.6
235	18	364	25.60	235	18	755	53
305	14	815	57.30	305	14	985	69.3



CRESCO® and DURAFORT by CRESCO® has established itself as one of the most important brands in PVC and CPVC pipes in the country offering standard products of the highest quality.



AZ Construction Supplies

📍 1409 Oriana Rd
Yorktown, VA. 23693

☎ 757 872 0700

✉ sales@azcsupplies.com

🌐 azcsupplies.com

